



### Quality

JERSEY 155

100% combed ringspun cotton  
Enzyme treatment for a softer handfeel

### Style

Ribbed round neck  
Taped neck  
Fitted cut  
Cut and sewn

### Available sizes





Sizes	XS	S	M	L	XL	XXL
A/B	62/38	64/41	66/44	68/47	70/50	72/53

### Available colours

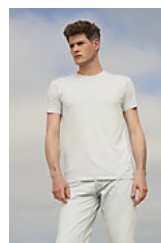


### Packaging

 Carton size : 52 x 36 x 20 cm

 Weight per carton : 6.00 kg

### Related products



SOL'S MARTIN MEN  
02855